

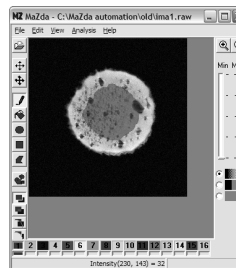
Analysis automation

text script files

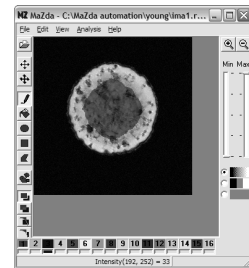
LoadImage *file_path_and_name* – loads an image for analysis from a given file,
LoadROI *file_path_and_name* – loads regions of interest from a given file,
LoadOptions *file_path_and_name* – loads options from a given file,
LoadReport *file_path_and_name* – loads a report into the report window,
ColorChannel [*arg = Y, R, G, B, U, V, H or S*] – selection of color conversion mode,
ReloadImage – reloading an opened image
RunAnalysis – starts the analysis process,
Execute *file_path_and_name argument_list* – executes program from a given file,
AggregateReports – joins data from two reports,
SaveImage – saves an opened image,
SaveSelected *file_path_and_name* – saves selected features to a given file,
SaveReport *file_path_and_name* – saves report from opened tab-page of report window to a given file,
SaveMap *file_path_and_name* – saves feature map from opened tab-page to a given file,
CloseReport – closes opened tab-page of report window,
CloseMap – closes opened tab-page of feature map,
Exit – unconditional MaZda termination.

Analysis automation

example



MRI cross-section of soft cheese (old)
3 samples

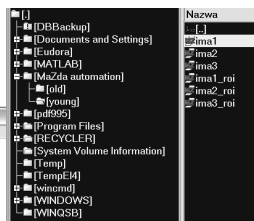


MRI cross-section of soft cheese (young)
3 samples

Analysis automation

example

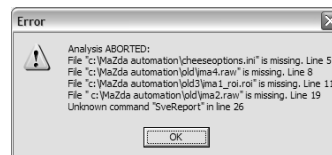
```
cheese.txt - Notepad
//soft cheese image analysis, 256x256 raw data, 71ash
/old cheeses
LoadOptions c:\MaZda automation\cheese options.ini
LoadImage c:\MaZda automation\old\ima1.raw
LoadROI c:\MaZda automation\old\ima1_roi.roi
RunAnalysis
SaveReport c:\MaZda automation\old\ima1_old.par
SaveMap c:\MaZda automation\old\ima1_old.bmp
LoadImage c:\MaZda automation\old\ima2.raw
LoadROI c:\MaZda automation\old\ima2_roi.roi
RunAnalysis
SaveReport c:\MaZda automation\old\ima2_old.par
CloseMap
LoadImage c:\MaZda automation\old\ima3.raw
LoadROI c:\MaZda automation\old\ima3_roi.roi
RunAnalysis
SaveReport c:\MaZda automation\old\ima3_old.par
CloseMap
```



File->Run macro...
cheese.txt

Analysis automation

example



File->Run macro...
cheese error.txt