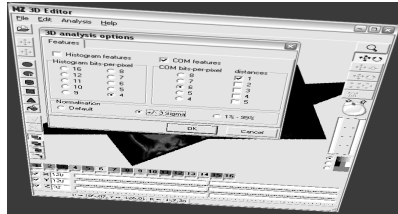


Report on Software MaZda 4.2

Piotr M. Szczypiński
Institute of Electronics, Technical University of Łódź
COST B21 Conference, 2006.04.xx



What's new

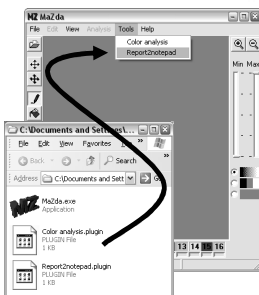
- ⌘ Plugins
- ⌘ New instructions for MaZda macros
- ⌘ Extension of 3D Editing tools
- ⌘ 3D image analysis capabilities
- ⌘ Modification of a report format
- ⌘ New feature selection methods
- ⌘ Unsupervised image segmentation
- ⌘ New MaZda manual

Piotr M. Szczypiński

Report on Software

2

Plugins



*Plugins are implemented in MaZda through its macro technology. Macro files given a ".plugin" extension, located in MaZda's working directory are recognized as plugins, and are accessible from the MaZda menu. The new **Execute** command lets to execute other programs.*

Piotr M. Szczypiński

Report on Software

3

Macro instructions

There are new instructions, which may be used in MaZda macros:

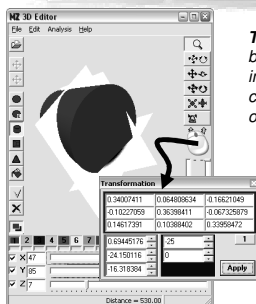
- Execute** - executes other program,
- SaveImage** - to save an image (bmp, dicom, raw),
- LoadReport** - to load a report,
- SaveSelected** - to save selected features.

Piotr M. Szczypiński

Report on Software

4

3D Editing tools



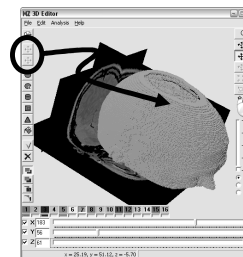
Transformation toolbox is invoked by double-clicking on the mouse image. With the toolbox it is easy to control location, size and orientation of a region of interest block.

Piotr M. Szczypiński

Report on Software

5

3D Editing tools



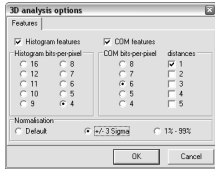
*Now with **Move** or **Copy** tools it is possible to move or copy a 3D region of interest that was already created.*

Piotr M. Szczypiński

Report on Software

6

3D Analysis



Procedures for 3D image normalization and textural analysis have been implemented. The methods based on co-occurrence matrix and histogram analysis are available.

Piotr M. Szczypiński

Report on Software

7

Report format

Feature	k1	k2	k3
Area	1820	2680	2052
MaxHom	32	33	32
MinHom	85	82	82
Mean	43.658	42.741	42.608
StdDev	14.022	10.094	10.576
Skewness	0.85273	0.13761	0.32812
Kurtosis	1.9514	0.81707	0.85114

The features, which should not be considered for selection and further analysis (e.g. normalization parameters or area) have been added an underscore (_) prefix.

Piotr M. Szczypiński

Report on Software

8

Feature selection

Feature	k1	k2	k3
Area	1820	2680	2052
MaxHom	32	33	32
MinHom	85	82	82
Mean	43.658	42.741	42.608
StdDev	14.022	10.094	10.576
Skewness	0.85273	0.13761	0.32812
Kurtosis	1.9514	0.81707	0.85114

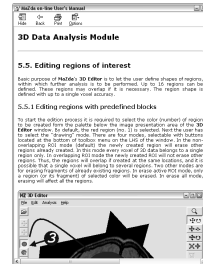
New supervised feature selection method, based on optimal subsets of features, provides minimal 1-NN classification error. These subsets contain one, two or three features

Piotr M. Szczypiński

Report on Software

9

MaZda Manual



The new MaZda manual includes issues of 3D image analysis, editing of 3D regions of interest, MaZda plugins and macros, new feature selection procedures, and unsupervised methods for feature selection and image segmentation.

Piotr M. Szczypiński

Report on Software

10

Known bugs



Dicom files saved by MaZda are not readable by some other software. Analysis does not start on computers with little memory.

Piotr M. Szczypiński

Report on Software

11

Future work



Plugin system is to be tested with Scopira.

Piotr M. Szczypiński

Report on Software

12