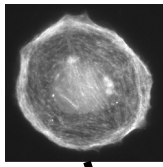
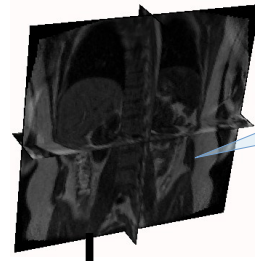


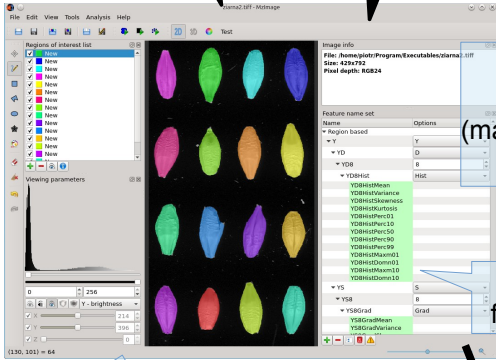
qmazda



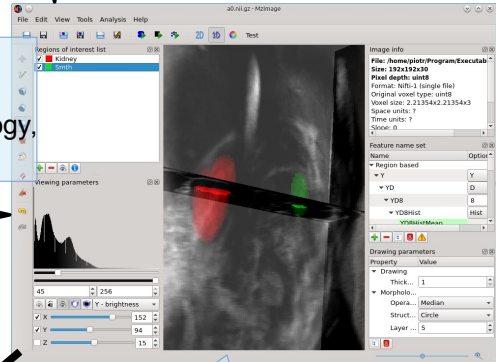
2D grayscale or color images.



3D data (MRI, CT)



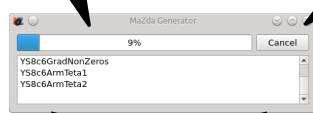
User defines region or volumes of interest (manually, image morphology, deformable models)



User specifies features to compute

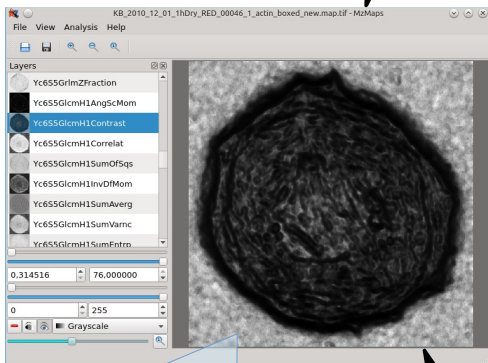
Color images are viewed as monochrome color channels (RGB, YUV, HSB)

Volume rendering: cross-sections and MIP-like



Feature maps computation (color and texture)

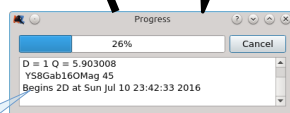
Computation of ROI feature vectors (color, texture and morphology descriptors)



Feature maps viewer. Saliency map computation and image segmentation.

	Afrodita	Afrodita	Afrodita	BLASK	BLASK	BLASK	BLASK
oSSSH1SumOfSqs	25.0205	24.5367	24.3588	25.1695	25.185	24.4142	23.7403
oSSSH1InvDfMom	0.685792	0.68183	0.727904	0.670049	0.672838	0.691839	0.691434
oSSSH1SumAverg	32.6099	32.4417	32.5211	32.5185	32.5631	32.6097	32.4801
oSSSH1SumVarc	97.9993	95.9342	95.7955	98.7417	98.7636	95.6428	93.7601
oSSSH1SumEntrop	1.56834	1.5499	1.53976	1.56991	1.58932	1.56218	1.555
oSSSH1Entropy	1.90946	1.89046	1.82956	1.92206	1.95109	1.89426	1.80409
oSSSH1DfVarc	1.42302	1.51504	1.16751	1.23064	1.27952	1.37226	1.50616
oSSSH1DfEntrop	0.522721	0.53386	0.478659	0.534957	0.528517	0.523729	0.531395
oSSSV1AngScMom	0.016323	0.016925	0.014918	0.013142	0.015448	0.016315	0.016096
oSSSV1Contrast	5.07306	4.6053	4.62591	4.56771	4.17321	4.08671	5.33667
oSSSV1Correlat	0.894468	0.899499	0.897795	0.905652	0.912573	0.911029	0.878122
oSSSV1SumOfSqs	24.0356	23.286	22.6305	24.2068	23.8668	22.9666	21.8934
oSSSV1InvDfMom	0.571236	0.586968	0.569504	0.54118	0.588622	0.593935	0.576032
oSSSV1SumAverg	32.8307	32.718	32.8432	32.7673	32.82	32.8874	32.8159
oSSSV1SumVarc	91.0695	88.4635	85.8961	92.2595	91.294	87.7795	82.237
oSSSV1SumEntrop	1.56124	1.54998	1.53853	1.56554	1.56373	1.56374	1.55716

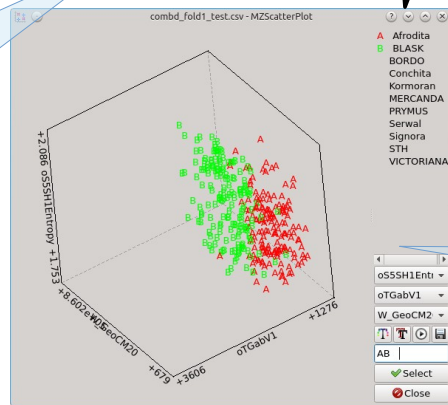
Report: Columns – regions (columns are labeled) Rows – features.



	Afrodita	BLASK	BORDO	Conchita	Kormoran	MERCANDA	PRYMUS	Serwal	Signora
Afrodita	82	0	0	11	4	1	0	10	1
BLASK	0	95	6	1	2	2	3	1	5
BORDO	4	4	92	0	0	0	3	1	2
Conchita	5	2	1	98	0	0	0	10	8
Kormoran	7	3	2	14	64	6	4	3	0
MERCANDA	1	6	3	0	3	68	4	1	6
PRYMUS	1	3	2	0	5	2	83	0	2
Serwal	12	2	0	13	8	0	1	64	4
Signora	4	6	2	5	0	6	1	6	90
STH	13	4	0	1	6	0	3	17	1
VICTORIANA	5	2	4	5	0	4	5	1	18

Validation of classifiers

Discriminative feature and feature subsets selection, projection, discriminant analysis, machine learning



Vector distributions viewer